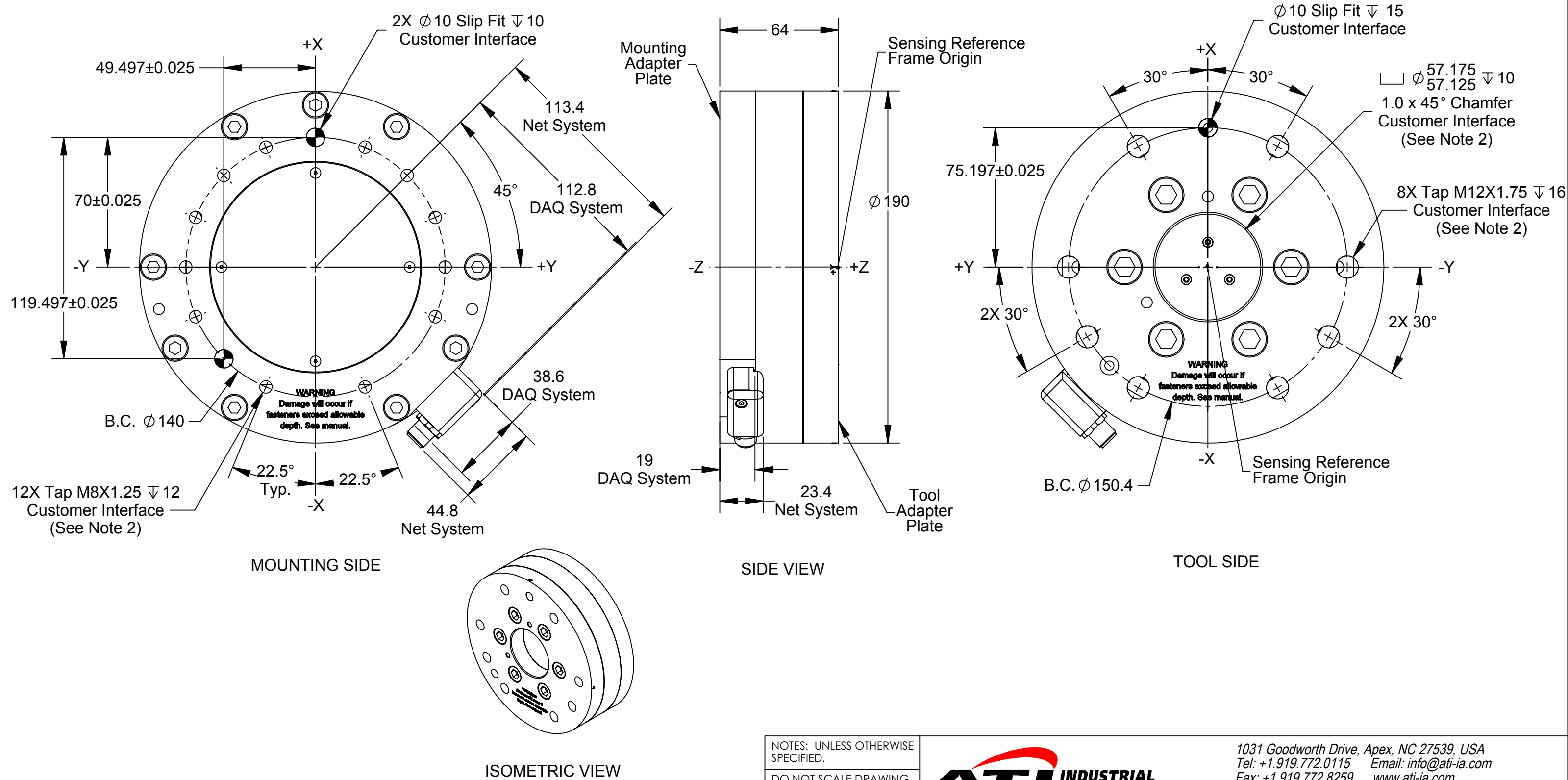


Rev.	Description	Initiator	Date
03	ECO 14230; Added chamfer call out and updated tapped hole call outs to standard.	SZJ	7/13/2016



- Notes:
1. Material: Hardened Steel and Stainless Steel
  2. **DO NOT EXCEED INTERFACE DEPTH, MAY CAUSE DAMAGE**
  3. Do not disassemble transducer. Doing so could damage transducer and will void the warranty.
  4. For best accuracy transducer must be mounted to a surface rigid enough to support loads without deflection.

NOTES: UNLESS OTHERWISE SPECIFIED.

DO NOT SCALE DRAWING. ALL DIMENSIONS ARE IN MILLIMETERS.

1031 Goodworth Drive, Apex, NC 27539, USA  
Tel: +1.919.772.0115 Email: [info@ati-ia.com](mailto:info@ati-ia.com)  
Fax: +1.919.772.8259 www.[ati-ia.com](http://ati-ia.com)  
ISO 9001 Registered Company

PROPERTY OF ATI INDUSTRIAL AUTOMATION, INC. NOT TO BE REPRODUCED IN ANY MANNER EXCEPT ON ORDER OR WITH PRIOR WRITTEN AUTHORIZATION OF ATI.

DRAWN BY: L. Fisher, 2/27/14		TITLE	
CHECKED BY: P. Fusco, 2/28/2014		Omega191 DAQ/Net Transducer	
PROJECT # 140217-3	SHEET 1 OF 1	SCALE 1:2	SIZE B
		DRAWING NUMBER 9230-05-1464	REVISION 03